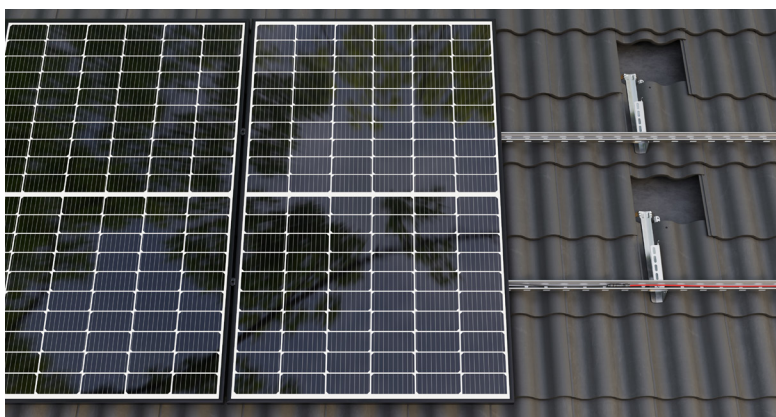


MAFI 91267

Solar

Roof Tile Bracket



About the Product

The Roof Tile Bracket is a two-in-one bracket. It is designed to be fastened to the roof batten (min. 25x38mm) or the boarded subroof (min. 17mm), which enables the mounting of solar panels on curved roof tiles. The Roof Tile Bracket is made from Magnelis ® and is IP-protected.

Flexibility

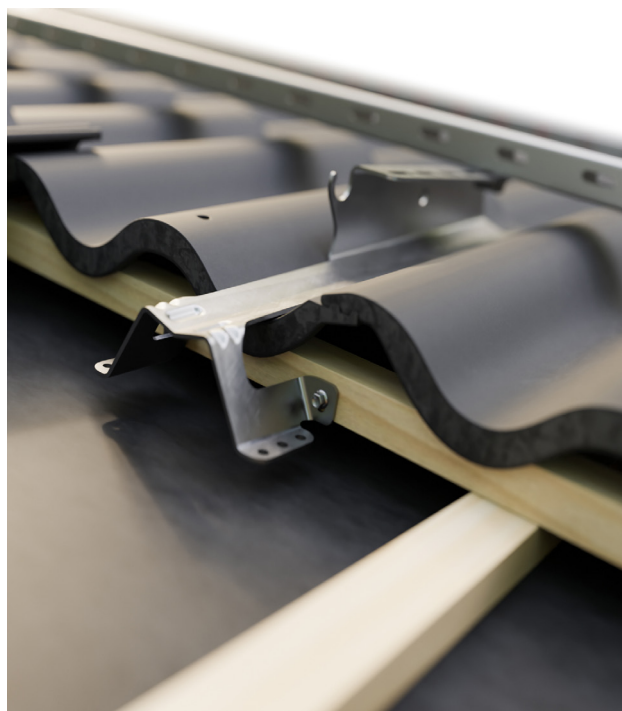
The Roof Tile Bracket is profiled to follow the shape of a curved roof tile to enable mounting without having to grind on, or to displace, the tiles. The Solar Rail can be installed both vertically and horizontally. When installed horizontally, the bracket has a versatile equipment hole pattern for matching the clamping zone of the panel and a stop hook to temporarily support the Solar Rail before mounting. It comes with a fixing possibility for Ø20 mm electrical routing tube which is integrated into the bracket. The recognizable MAFI hole pattern enables installations together with Roof Tile Heavy on the same roof.

How to Order

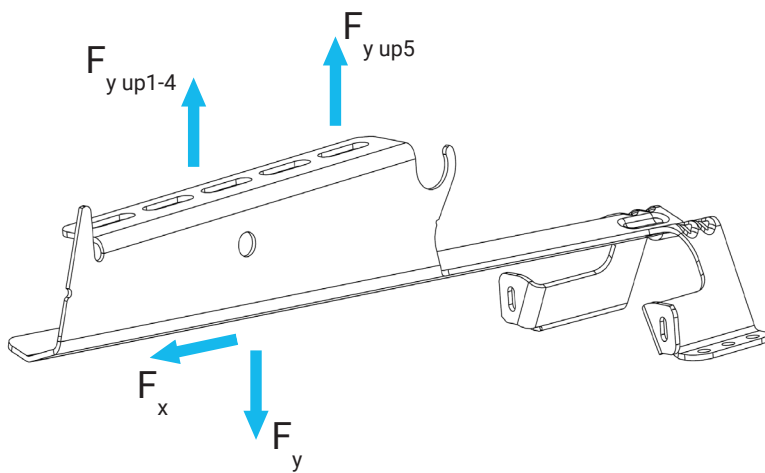
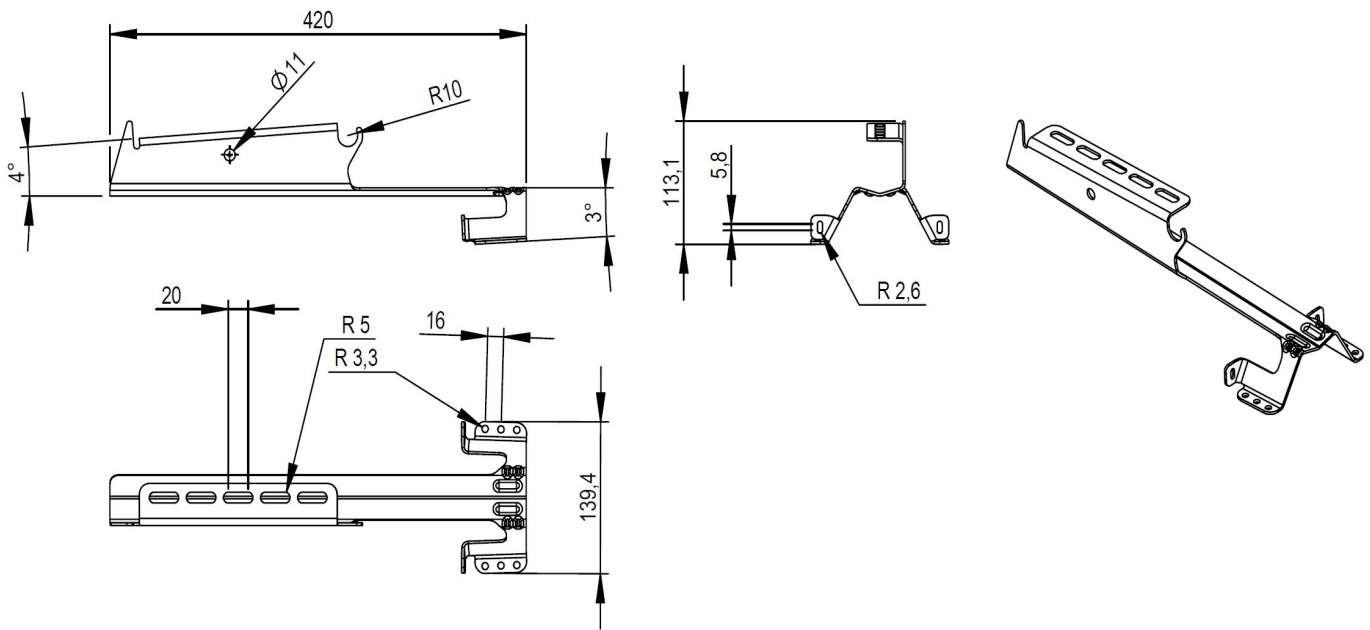
To order, please contact MAFI quoting article number:

MAFI 91267

Please visit <https://www.mafigroup.com/how-to-order/> for regional contact information.



Measurements in millimeters



Info

Ultimate design load

$F_{y \text{ down}}$ max: 1500 N (0°- 22°)*

$F_{y \text{ up1-4}}$ max lower slots 1-4: 200 N

$F_{y \text{ up5}}$ max upper slot 5: 250 N

F_x max: 950 N (90°)*

*Ultimate design load for different roof slopes can be found in table.

Parts list

| Part | Material | Quantity | Weight (g) |
|-------------------|--------------|----------|------------|
| Roof Tile Bracket | S550GD ZM310 | 1 | 826 |

Compatible products

9840: Fastener for Tile roof 4,8x32 HEX A2

9841: Fastener for Roof Tile Bracket 6.0x75

9834: Flange Bolt M8x20

9839: Speed Clip

9843: HEX Locker 8 mm



91267